

Schaerer Coffee Vito

Model Milk Powder SCV PM
(coffee / hot water / Powder)

June 2011



Basic configuration

Spouts: coffee / hot water	1 / 1
Boilers: coffee and hot water	1
Grinder / Inlet for ground coffee	1 / 1
Programmable beverage selection	up to 14 beverages
Bean hopper	each 1.1 kg
Water supply	Tank
Illuminated panel	Colour of your choice or continually changing

Connections

Voltage			Power	fuse protection
1L, N, PE:	220-240V~	50/60Hz	2000-2200 W	10-16 A
1L, N, PE:	100-120V~	50/60Hz	1800-2100 W	20 A
2L, PE:	200-220V 2~	50/60Hz	1700-1900 W	2x15 A
			2600-3200 W	2x15 A
Water connection	G 3/8 " max 0.6 MPa (6 bar)			
Water outlet	Ø 56 mm			
Water hardness	4°-6° dKH / 8°-10° fKH			

Dimensions

Width / depth / height	329 / 585 / 860 mm
Weight	about 36 kg

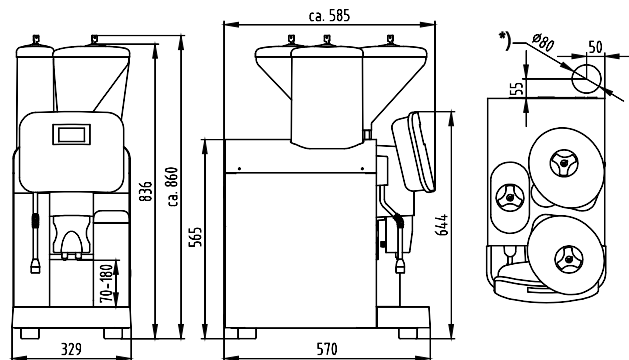
Output per hour (approximate)

Espresso (cup of 50 - 60ml)	100
Coffee (cup of 120 ml)	80
Cappuccino (cup of 180 ml) / Latte Macchiato (cup of 200 ml)	60 / 40
Moccaccino (cup of 180 ml) / Hot chocolate (cup of 180 ml)	60 / 60

Options

Second Grinder	Powder-Systems:
Cup warmer or Cup & Cool	- Topping (1x milk powder)
Fixed water connection / Aquaflex	- Choco (1x chocopowder)
External waste water tank with level monitoring (only for mains water supply) 13 liter	- Choco/Topping (1x choco- & 1x milk powder)
external drinking water tank (only for mains water supply) 16 liter	- Twin Topping (2x milk powder)
Chute for under-counter grounds disposal	
Connection to all commercial invoicing systems	

Dimensions



Colours

Illustrations may not reflect actual colour



Kenya, Black

* Counter cutout for power, drinking water and wast water / Differences between the offered machine and the picture and the configuration are possible.

Schaerer Ltd.
P.O. Box
Allmendweg 8
CH-4528 Zuchwil
T +41 (0)32 681 62 00
F +41 (0)32 681 62 42
info@schaerer.com
www.schaerer.com

 **schaerer**
Coffee comes to life

SWISS MADE